

**7W/15W**

187 LM/W (MAX)

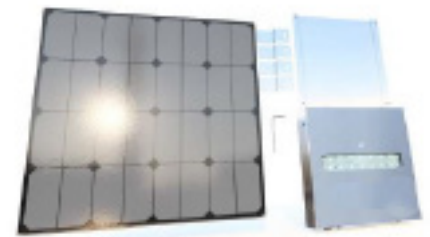
# K811 Single Solar Light Kit

Available for new and existing shelters to provide a well-lit, safer environment for your community.



Our solar light kit is a modular, LED lighting system with split panel and light designed to illuminate under shelters using solar power.

Built to withstand the toughest environments, the 316 grade stainless steel exterior shell and toughened glass lens is highly vandal resistant and can be used in new and existing shelters. It is easy to install with a compact integrated battery making it a cost saving lighting solution.



**7W/15W**

187 LM/W (MAX)



PASSIVE INFRA RED MOTION DETECTION



UP TO 54 HOURS

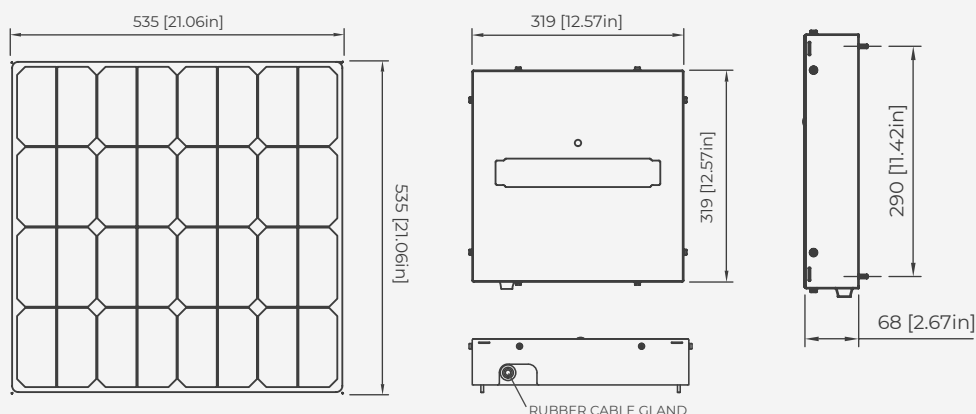


VANDAL RESISTANT



5 YR UNIT WARRANTY

## Product Dimensions



## PRODUCT SPECIFICATIONS

### Operating control / operation modes

1. All Night Mode	Operates at a constant all night level of illumination until dawn
2. Sensor Mode	Detects movement and increases illumination up to 100% until no motion is detected for 30 seconds.
3. Surprise Mode	No light until motion is detected then turns on until no motion is detected for 30 seconds.

\* Configurable TIMER settings for ON / OFF / DIM are available upon request.

### LED

Type	CREE XP-G LED
Watts (Light Output)	15W (Boost Mode) / 7.5W (Normal Operation)
Lumens	187 lm/W (Max.)
CCT (Colour Temperature)	4000K (Standard) / 3000K (Optional)
Motion Sensor (PIR)	6m / 20" detection zone (360°) Activates for 30 seconds
Optics	T3 (Standard) 135° x 85°   T5 (Optional) 110° x 135°

### Battery

Autonomy	54 hours (4.5 nights)*
Battery Type / Capacity	LiFePo4 12.8v 32Ah (409.6Wh)

### Solar Panel

Watts (p) / Type	65W N type monocrystalline with edgeless frame design
Efficiency	24%

### Unit

Material	Heavy duty IP65 316 grade stainless steel exterior shell & solar panel support frame
Product Dimensions	Panel assembly: L535 x W535 x H20 / L24.4" x W24.4" x H0.8" Fixture: 320mmL x 320mmW x 80mmH / 12.6"L x 12.6"W x 3.1"H
Package Dimensions	Boxed panel: L620 x W620 x H100 / L24.4" x W24.4" x H4" Boxed fixture: L400 x W400 x H120 / L15.7" x W15.7" x H4.7"
Package Weight	Complete unit: 19.5 kg / 43 lb
Sail Area / EPA	0.1146 m <sup>2</sup> / 1.2333 FT <sup>2</sup>

### Environmental

Operating Temp. Range	-20°C to 70°C / -4°F to 158°F
IP Rating	IP65
Impact Rating	IK10
Wind rating (up to)	318kmph / 198mph

### Warranty

Warranty Period	10 years (Battery)* / 5 years (Unit) / 25 years (Solar Panel)
-----------------	---