

ALL DIMENSIONS IN MILLIMETRES - DO NOT SCALE

**DOOR LEGEND**

- D1-2040x925 COLORBOND CLAD **SOLIDCORE** DOOR-STEEL FRAME
- D2-2040x825 COLORBOND CLAD **SOLIDCORE** DOOR-STEEL FRAME
- D3-2040x925 COLORBOND CLAD **SOLIDCORE** DOOR-STEEL FRAME
- D4-2040x925 COLORBOND CLAD **SOLIDCORE** DOOR-STEEL FRAME
- D5-2040x825 COLORBOND CLAD **SOLIDCORE** DOOR-STEEL FRAME
- R1-900x1800 COLORBOND ROLLER DOOR

**NOTE**

ALL **SOLIDCORE** DOORS TO HAVE 4 HINGES PER DOOR

**FIXTURE LEGEND**

- WD = STAINLESS STEEL DISABLED COMPLIANT PAN CLOSE COUPLED CISTERN, DISABLED COMPLIANT RAILS, STAINLESS STEEL COMPLIANT BACK REST & TOILET ROLL HOLDER
- WC = STAINLESS STEEL PAN C/W INDUCT CISTERN, & TOILET ROLL HOLDER
- WCC = STAINLESS STEEL PAN CLOSE COUPLED CISTERN, & TOILET ROLL HOLDER
- SHR = SHOWER
- SHRD = DISABLED COMPLIANT SHOWER
- BL = STAINLESS STEEL BASIN C/W TORRENS FLARED LEVER SELF CLOSING COLD WATER TAP
- BP = STAINLESS STEEL BASIN C/W PUSH BUTTON TAP AND COLORBOND SHROUD
- SH = STAINLESS STEEL SHELF
- BCT = BABY CHANGE TABLE
- HC = BRASS VANDAL PROOF KEYED TAP WITH HOSE MOUNT
- BE = ALUMINIUM BENCH SEAT
- RDP = 90 DIA COLORBOND DOWN PIPE
- HD = HAND DRYER ( HARD WIRED )
- SD = SOAP DISPENSER

**NOTES**

1. ALL WALLS TO 2100 HIGH UNLESS SHOWN OR NOTED OTHERWISE.
2. INTERNAL WALLS TO KIOSK, EQUIPMENT STORE AND UNISEX ACCESSIBLE CUBICLES TO U/S RAFTER OR PURLIN.
3. VANDAL RESISTANT LIGHTS TO CHANGE ROOMS AND COVERED OUTDOOR AREA. STANDARD FLUORESCENT LIGHTS TO STORE AND KIOSK.
4. ALL TAPWARE, CISTERNS AND SHOWER HEADS ARE WELS RATED (MIN. 3 STAR RATING). SPECIFICATION AVAILABLE ON REQUEST.
5. CONCRETE FLOOR R10 FINISH SLIP RESISTANT.

**INSULATION -REQUIREMENTS - KIOSK ONLY**

1. ROOF R3.2 - SUITABLE FOR ALL MAINLAND CAPITAL CITIES - ASSUMES ROOF CLADDING HAS AN SAV OF  $\leq 0.4$
2. WALLS R2.8 - SUITABLE FOR ALL MAINLAND CAPITAL CITIES (SEQ REQUIRES LIGHT COLOURED CLADDING (SAV OF  $\leq 0.4$ ) AND EAVES)

**INSULATION - KIOSK ONLY**

1. KIOSK WALLS - 90mm METAL FRAME WITH BRADFORD GOLD BULK INSULATION R2.7.
2. KIOSK CEILING - BRADFORD GLASS WOOL ANTICON R1.3 AND BRADFORD GOLD CEILING BATTS R2.0.

**BUILDING CLASS**

1. KIOSK - CLASS 6
2. BALANCE OF BUILDING CLASS 10

**FLOOR PLAN**

SCALE 1:100

**CLIENTS DESIGN APPROVAL**

APPROVED

DATE:

© LANDMARK PRODUCTS LIMITED

THIS DOCUMENT IS AND SHALL REMAIN THE PROPERTY OF LANDMARK PRODUCTS LIMITED. UNAUTHORISED USE OF THIS DOCUMENT IN ANY FORM IS PROHIBITED.

CHECKED BY:

DATE:



Landmark Products Limited. PH: 1300 768 230  
 A.B.N. 99 112 000 843 FAX: 1300 768 260  
 55-57 Kabi Circuit, Deception Bay  
 P.O. Box 603, Deception Bay www.landmarkpro.com.au  
 Queensland 4508 landmark@landmarkpro.com.au

CLIENT NAME

**LANDMARK PRODUCTS**

PROJECT

**SPORT AND RECREATION - FOOTBALL  
 STANDARD FACILITIES BUILDING**

DRAWING TITLE

**BA - PLAN**

PROJECT No.

**Q28670/1**

PAGE

**A3**

DATE:

**26/04/16**

DRAWING No.

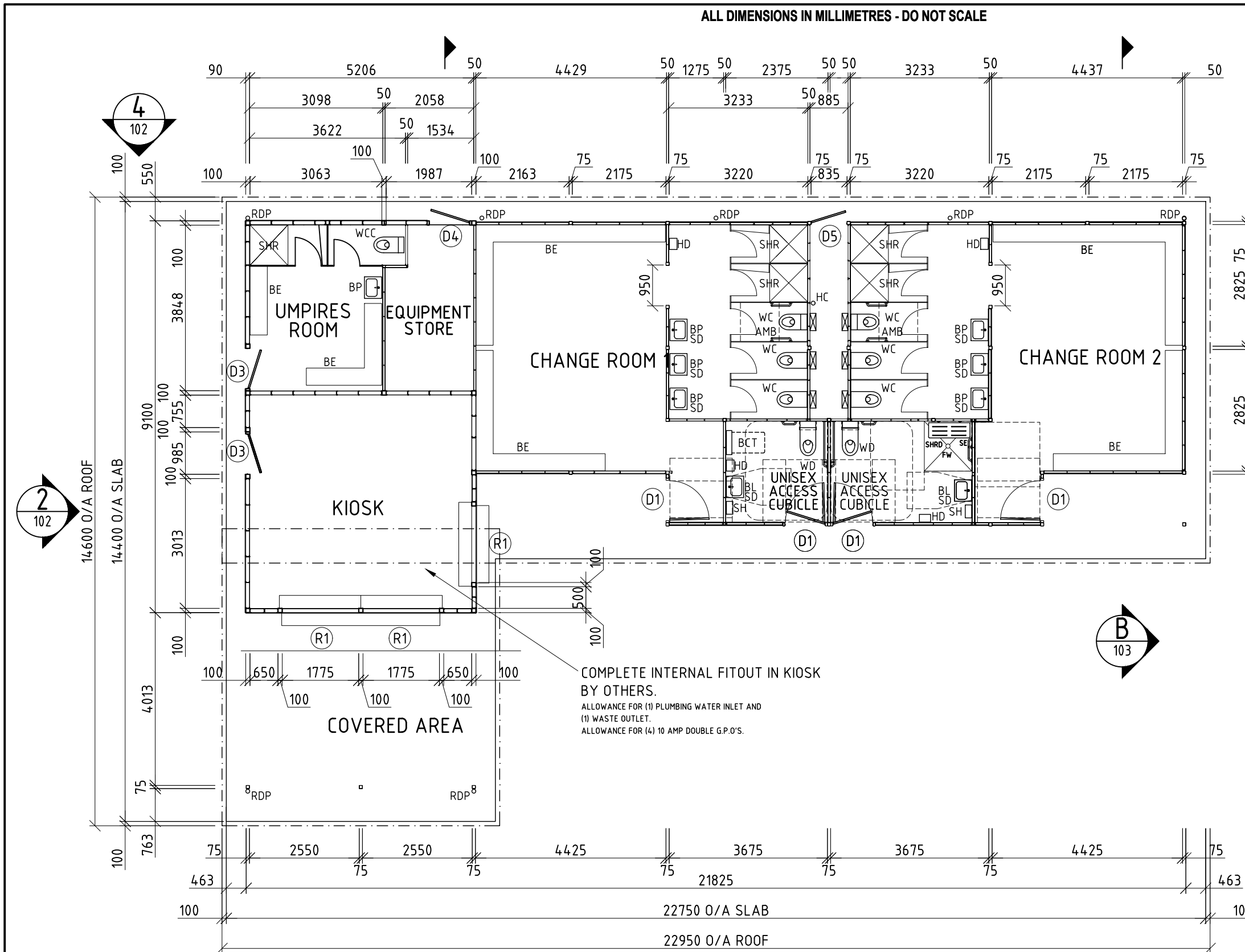
**Q28670/1**

SHEET No.

**101**

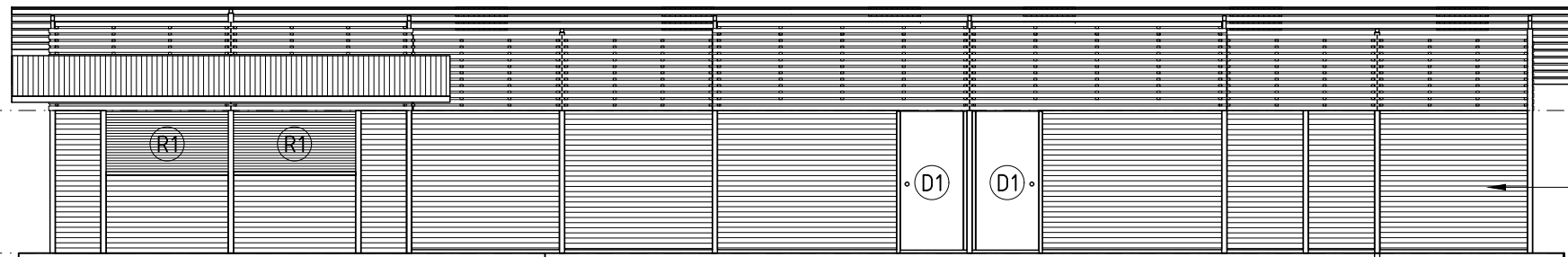
REV.

**0**



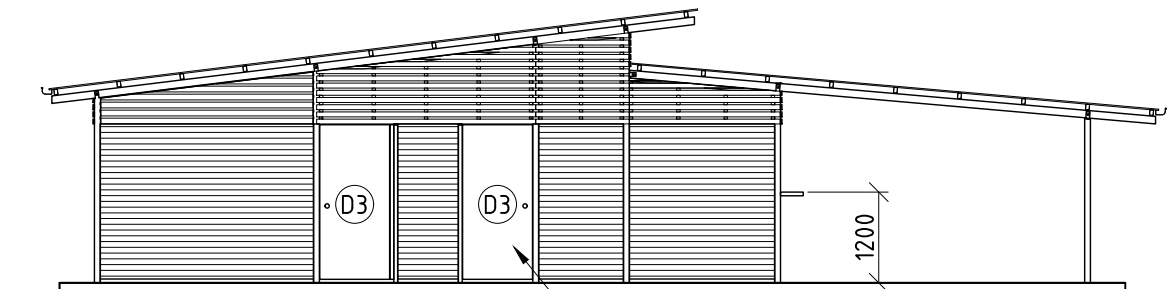
REVISION	DATE:	DRAWN BY:
6	-	-
5	-	-
4	-	-
3	-	-
2	-	-
1	-	-

ALL DIMENSIONS IN MILLIMETRES - DO NOT SCALE



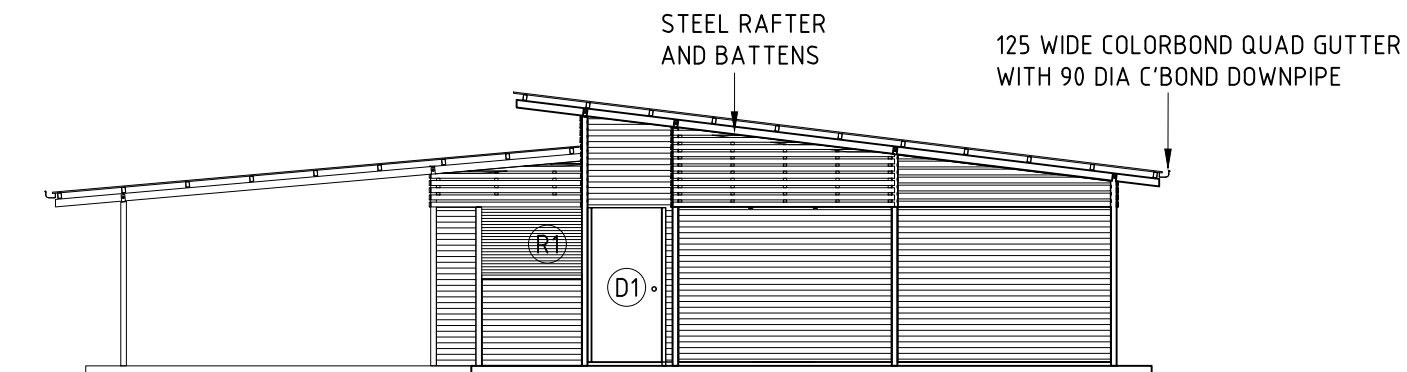
COLORBOND CUSTOM ORB  
EXTERNAL CLADDING.  
STRATCO MAXIRIB HORIZONTAL  
INTERNAL CLADDING. BOTH FIXED  
TO STEEL WALL FRAMES

**ELEVATION 1**  
SCALE 1:100



**ELEVATION 2**  
SCALE 1:100

COLORBOND CLAD  
TIMBER DOORS

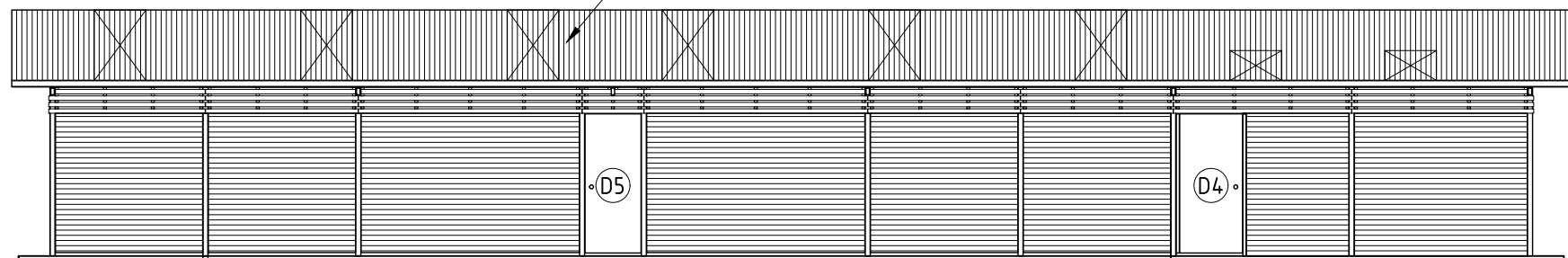


**ELEVATION 3**  
SCALE 1:100

STEEL RAFTER  
AND BATTENS

125 WIDE COLORBOND QUAD GUTTER  
WITH 90 DIA C'BOND DOWNPIPE

COLORBOND CUSTOM ORB ROOF SHEETING  
WITH INSULATION LAID ON WIRE MESH.  
WONDERGLAS PANELS OVER CHANGE  
ROOMS AND AMENITIES



**ELEVATION 4**  
SCALE 1:100

← WALL PANELS TO  
HAVE 50 GAP UNDER

→ WALL PANELS TO SLAB.  
50 FLASHING TO BOTTOM OF  
WALL SHEETING

**CLIENTS DESIGN APPROVAL**

APPROVED \_\_\_\_\_ DATE: \_\_\_\_\_

REVISION	DATE:	DRAWN BY:
6	-	-
5	-	-
4	-	-
3	-	-
2	-	-
1	-	-

DATE:	DRAWN BY:
-	-
-	-
-	-
-	-
-	-
-	-

© LANDMARK PRODUCTS LIMITED  
THIS DOCUMENT IS AND SHALL REMAIN THE PROPERTY OF  
LANDMARK PRODUCTS LIMITED.  
UNAUTHORISED USE OF THIS DOCUMENT IN ANY FORM IS  
PROHIBITED.

CHECKED BY: \_\_\_\_\_ DATE: \_\_\_\_\_

**Landmark**  
Enhancing Open Space Environments

Landmark Products Limited. PH: 1300 768 230  
A.B.N. 99 112 000 843 FAX: 1300 768 260  
55-57 Kabi Circuit, Deception Bay  
P.O. Box 603, Deception Bay www.landmarkpro.com.au  
Queensland 4508 landmark@landmarkpro.com.au

CLIENT NAME  
**LANDMARK PRODUCTS**

PROJECT  
**SPORT AND RECREATION - FOOTBALL  
STANDARD FACILITIES BUILDING**

DRAWING TITLE  
**BA - ELEVATIONS**

PROJECT No.	PAGE
Q28670/1	A3
DATE:	DRAWN
26/04/16	A.A
DRAWING No.	SCALE
Q28670/1	NOTED
SHEET No.	REV.
102	0