

ALL DIMENSIONS IN MILLIMETRES - DO NOT SCALE

DOOR LEGEND

- D1-2040x925 COLORBOND CLAD **SOLIDCORE** DOOR-STEEL FRAME
- D2-2040x825 COLORBOND CLAD **SOLIDCORE** DOOR-STEEL FRAME
- D3-2040x925 COLORBOND CLAD **SOLIDCORE** DOOR-STEEL FRAME
- D4-2040x1655 COLORBOND CLAD **SOLIDCORE** DOOR-STEEL FRAME
- D5-2040x825 COLORBOND CLAD **SOLIDCORE** DOOR-STEEL FRAME
- R1-900x1800 COLORBOND ROLLER DOOR
- R2-2100x2400 COLORBOND SECURITY ROLLER DOOR CW SECURITY STIFFENER & INTERNAL LOCKING.

NOTE

ALL SOLIDCORE DOORS TO HAVE 4 HINGES PER DOOR

FIXTURE LEGEND

- WD = STAINLESS STEEL DISABLED COMPLIANT PAN CLOSE COUPLED CISTERN, DISABLED COMPLIANT RAILS, STAINLESS STEEL COMPLIANT BACK REST & TOILET ROLL HOLDER
- WC = STAINLESS STEEL PAN C/W INDUCT CISTERN, & TOILET ROLL HOLDER
- WCC = STAINLESS STEEL PAN CLOSE COUPLED CISTERN, & TOILET ROLL HOLDER
- SHR = SHOWER
- SHRD = DISABLED COMPLIANT SHOWER
- BL = STAINLESS STEEL BASIN C/W TORRENS FLARED LEVER SELF CLOSING COLD WATER TAP
- BP = STAINLESS STEEL BASIN C/W PUSH BUTTON TAP AND COLORBOND SHROUD
- SH = STAINLESS STEEL SHELF
- BCT = BABY CHANGE TABLE
- HC = BRASS VANDAL PROOF KEYED TAP WITH HOSE MOUNT
- BE = ALUMINIUM BENCH SEAT
- RDP = 90 DIA COLORBOND DOWN PIPE
- HD = HAND DRYER (HARD WIRED)
- SD = SOAP DISPENSER

NOTES

1. ALL WALLS TO 2100 HIGH UNLESS SHOWN OR NOTED OTHERWISE.
2. INTERNAL WALLS TO KIOSK, EQUIPMENT STORE AND UNISEX ACCESSIBLE CUBICLES TO U/S RAFTER OR PURLIN.
3. VANDAL RESISTANT LIGHTS TO CHANGE ROOMS AND COVERED OUTDOOR AREA. STANDARD FLUORESCENT LIGHTS TO STORE AND KIOSK.
4. ALL TAPWARE, CISTERNS AND SHOWER HEADS ARE WELS RATED (MIN. 3 STAR RATING). SPECIFICATION AVAILABLE ON REQUEST.
5. CONCRETE FLOOR R10 FINISH SLIP RESISTANT.

INSULATION -REQUIREMENTS - KIOSK ONLY

1. ROOF R3.2 - SUITABLE FOR ALL MAINLAND CAPITAL CITIES - ASSUMES ROOF CLADDING HAS AN SAV OF ≤ 0.4
2. WALLS R2.8 - SUITABLE FOR ALL MAINLAND CAPITAL CITIES (SEQ REQUIRES LIGHT COLOURED CLADDING (SAV OF ≤ 0.4) AND EAVES)

INSULATION - KIOSK ONLY

1. KIOSK WALLS - 90mm METAL FRAME WITH BRADFORD GOLD BULK INSULATION R2.7.
2. KIOSK CEILING - BRADFORD GLASS WOOL ANTICON R1.3 AND BRADFORD GOLD CEILING BATTS R2.0.

BUILDING CLASS

1. KIOSK - CLASS 6
2. BALANCE OF BUILDING CLASS 10

FLOOR PLAN

SCALE 1:100

CLIENTS DESIGN APPROVAL

APPROVED

DATE:

© LANDMARK PRODUCTS LIMITED

THIS DOCUMENT IS AND SHALL REMAIN THE PROPERTY OF LANDMARK PRODUCTS LIMITED. UNAUTHORISED USE OF THIS DOCUMENT IN ANY FORM IS PROHIBITED.

CHECKED BY:

DATE:



Landmark Products Limited. PH: 1300 768 230
 A.B.N. 99 112 000 843 FAX: 1300 768 260
 55-57 Kabi Circuit, Deception Bay
 P.O. Box 603, Deception Bay www.landmarkpro.com.au
 Queensland 4508 landmark@landmarkpro.com.au

CLIENT NAME

LANDMARK PRODUCTS

PROJECT

**SPORT AND RECREATION - CRICKET
 STANDARD FACILITIES BUILDING**

DRAWING TITLE

BA - PLAN

PROJECT No.

Q28670/2

PAGE

A3

DATE:

26/04/16

DRAWING No.

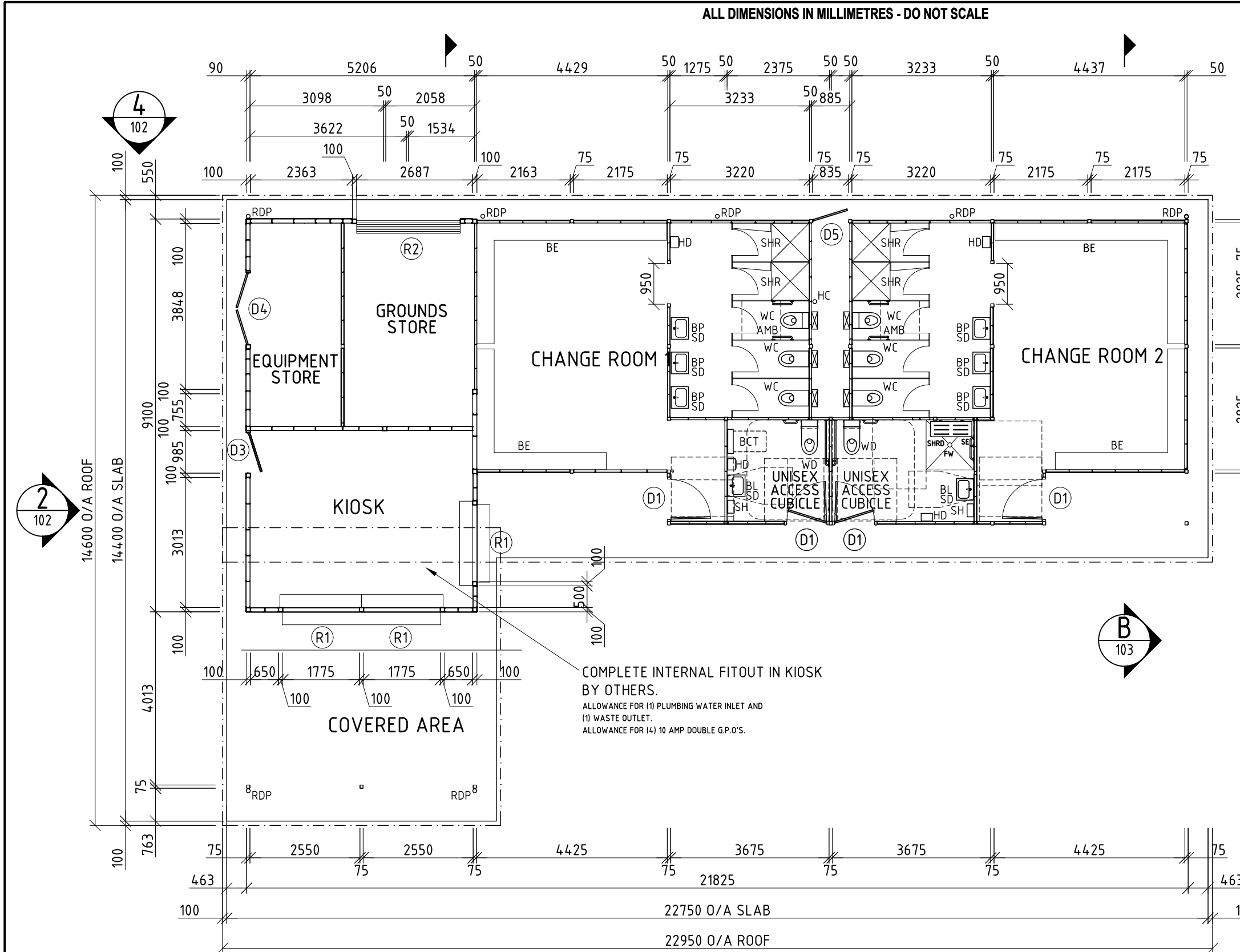
Q28670/2

SHEET No.

101

REV.

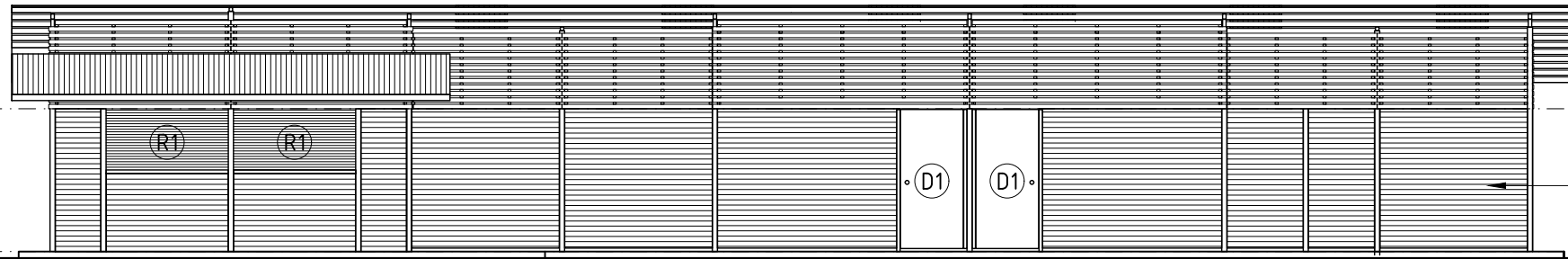
0



COMPLETE INTERNAL FITOUT IN KIOSK BY OTHERS.
 ALLOWANCE FOR (1) PLUMBING WATER INLET AND (1) WASTE OUTLET.
 ALLOWANCE FOR (4) 10 AMP DOUBLE G.P.O.'S.

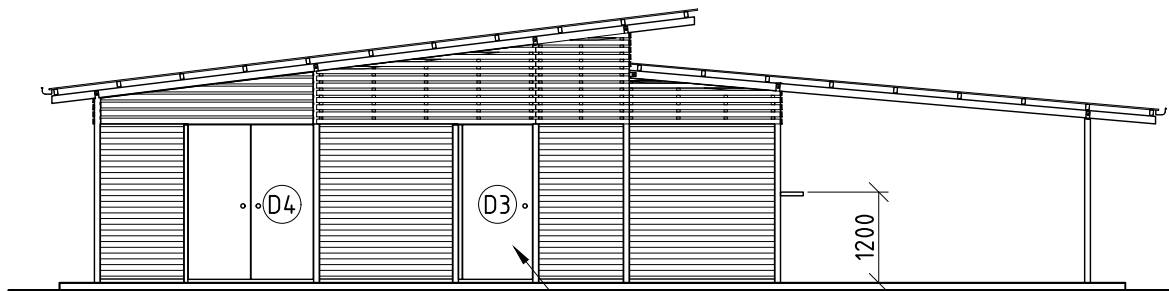
REVISION	DATE:	DRAWN BY:
6	-	-
5	-	-
4	-	-
3	-	-
2	-	-
1	-	-

ALL DIMENSIONS IN MILLIMETRES - DO NOT SCALE



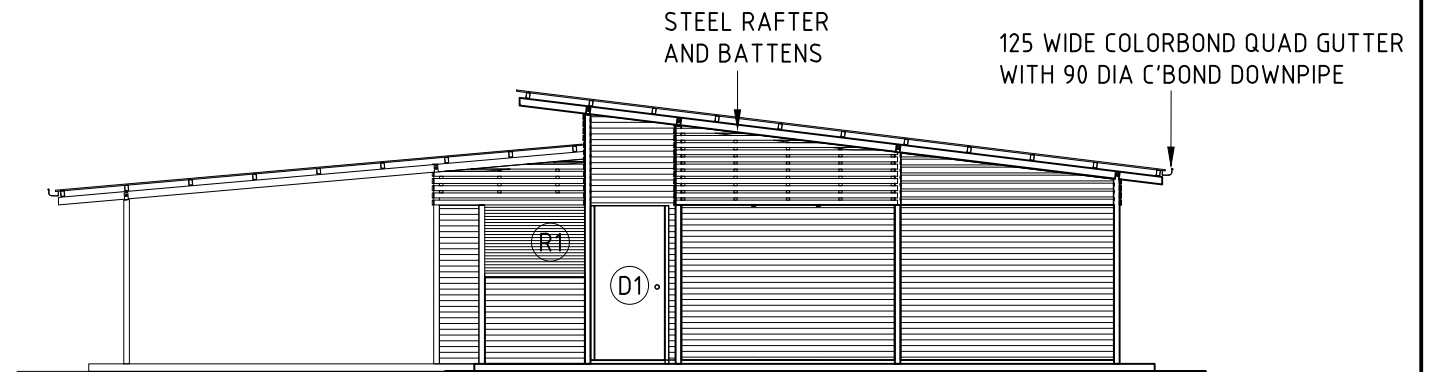
COLORBOND CUSTOM ORB
EXTERNAL CLADDING.
STRATCO MAXIRIB HORIZONTAL
INTERNAL CLADDING. BOTH FIXED
TO STEEL WALL FRAMES

ELEVATION 1
SCALE 1:100



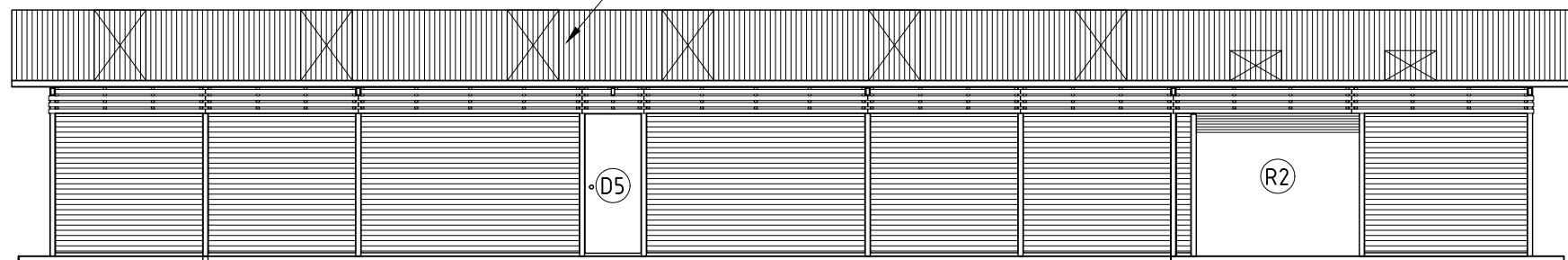
ELEVATION 2
SCALE 1:100

COLORBOND CLAD
TIMBER DOORS



ELEVATION 3
SCALE 1:100

COLORBOND CUSTOM ORB ROOF SHEETING
WITH INSULATION LAID ON WIRE MESH.
WONDERGLAS PANELS OVER CHANGE
ROOMS AND AMENITIES



ELEVATION 4
SCALE 1:100

← WALL PANELS TO
HAVE 50 GAP UNDER

WALL PANELS TO SLAB.
50 FLASHING TO BOTTOM OF
WALL SHEETING →

CLIENTS DESIGN APPROVAL	
APPROVED	DATE:

REVISION	DATE:	DRAWN BY:
6	-	-
5	-	-
4	-	-
3	-	-
2	-	-
1	-	-

CHECKED BY:	DATE:
-------------	-------

© LANDMARK PRODUCTS LIMITED
THIS DOCUMENT IS AND SHALL REMAIN THE PROPERTY OF
LANDMARK PRODUCTS LIMITED.
UNAUTHORISED USE OF THIS DOCUMENT IN ANY FORM IS
PROHIBITED.

Landmark
Enhancing Open Space Environments

Landmark Products Limited. PH: 1300 768 230
A.B.N. 99 112 000 843 FAX: 1300 768 260
55-57 Kabi Circuit, Deception Bay
P.O. Box 603, Deception Bay www.landmarkpro.com.au
Queensland 4508 landmark@landmarkpro.com.au

CLIENT NAME LANDMARK PRODUCTS	PROJECT No. Q28670/2	PAGE A3
PROJECT SPORT AND RECREATION - CRICKET STANDARD FACILITIES BUILDING	DATE: 26/04/16	DRAWN A.A
DRAWING TITLE BA - ELEVATIONS	DRAWING No. Q28670/2	SCALE NOTED
	SHEET No. 102	REV. 0