



Quality  
ISO 9001  
 SAI GLOBAL

***SPECIFICATION:***

**MATERIALS:**

Castings - Recycled Cast aluminium  
Timbers - Hardwood Timber  
Fixings - Grade 304 Stainless steel

**DIMENSIONS:**

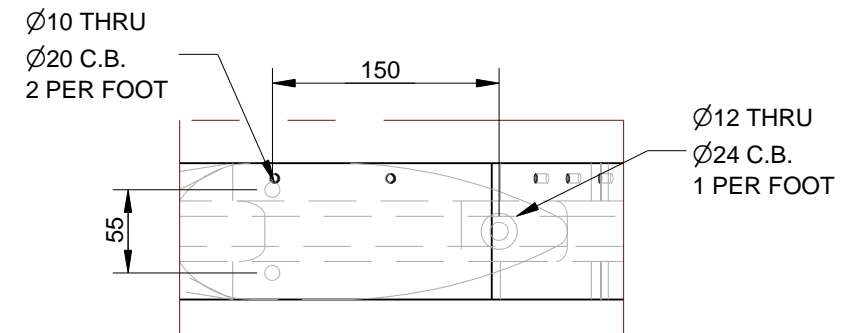
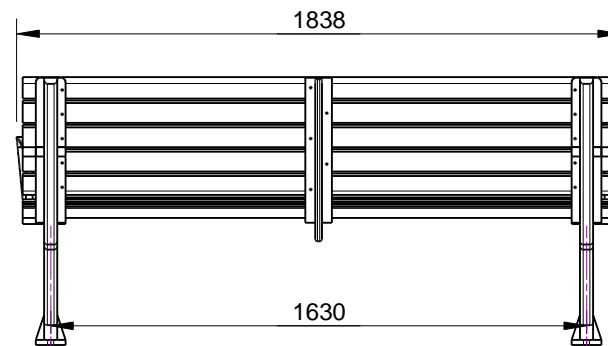
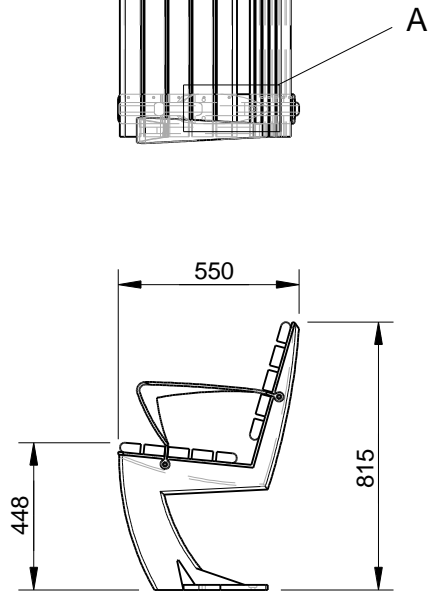
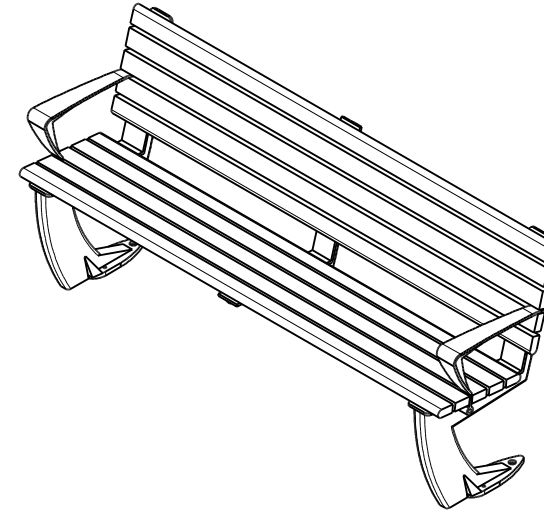
mm unless otherwise stated

## FINISH:

Castings - Mill Finish with polished arm rests  
Timber - Oil Based

## GROUND FIXING:

Bolt down



Detail A  
BOLT DOWN DETAIL  
TIMBERS AND ARM  
REST REMOVED  
FOR CLARRITY



CONFIDENTIAL

REVISION	#	DESCRIPTION	BY	DATE	DRAWN	DRAWN DATE	CHECKED	CHECKED DATE	SCALE	A4
	1	ORIGINAL DRAWING	DN	28.10.10	R.CRIGTON	4.12.13			N/A	
	2	FULL PRODUCT REVIEW	RBC	4.12.13	 	CORSO SEAT SPEC.				
	3									
	4									
	5									
						FFSA002026			REV. 2	SHEET 1 OF 3