



Changing Places



Proud supporter of
Changing Places

Specially equipped on-slab restrooms

landmarkpro.com.au | 1300 768 230

 **Landmark**
open space structures & solutions

BRISBANE | SYDNEY | MELBOURNE | ADELAIDE | PERTH | AUCKLAND

About Landmark

Landmark Products offers a complete, professional open space structure and furniture service throughout Australia.

From design through to manufacturing and installation, Landmark Products can deliver a total project solution.

With over 30 years' experience, and a team of highly skilful, expert specialists in public use infrastructure, Landmark is committed to exceeding the expectations of our clients, whether for a relatively straightforward project such as to supply street furniture, or for complex, large scale, custom built urban projects.



What is Changing Places

Changing Places is an international project, originally started in the UK in 2006, which advocates for the building of public toilets that cater to people with severe or profound disabilities.

There are now thousands of such facilities around the world, and Changing Places Australia has made significant advances.

People with severe disabilities are sometimes accompanied by their carers to parks and other public areas for recreational and refreshment, but without a Changing Places facility, the length of their stay is often restricted.

The main features of Changing Places restrooms are adult-sized change tables, showers and automated overhead hoists. Access to the facility is only possible with an MLAK key.

Having such facilities in public places, gives people with profound disabilities and their carers greater peace of mind, and flexibility to enjoy their time away from home.

As a public restroom specialist, Landmark Products is your ideal partner in designing and building a Changing Places restroom.



Why Landmark?



Long life - build quality

At Landmark we understand the demands placed on our products

through public use, and the need to take a whole-of-life approach to these important community assets.

From design through to manufacturing, installation and ongoing maintenance, our products have been designed with visual appeal, durability and functionality front-of-mind. For this reason, we confidently offer a 10-year structural guarantee on restrooms, extended to 20-year if installed by Landmark or a Landmark approved installer.



Widest product range

With Australia's largest range of standard open

space structures and park furniture, there are pre-designed and pre-engineered solutions available for almost every specification, delivering significant time savings, as well as reducing design, engineering and compliance costs.

If needed, all standard products can be modified to suit, or if you are looking for something unique our highly experienced design team can deliver a complete custom solution.



Site specific solutions

Through years of experience Landmark understands the

challenges our diverse country can present in the delivery of open space projects.

By considering and analysing a multitude of factors, Landmark design, engineer and manufacture each product to suit individual site specifications, working with you to select the most appropriate design and materials for the application, location, environment and budget.



Customer service

Landmark Products is committed to ensuring prompt and effective

service from first enquiry through to project completion. Our customer service staff and Project Consultants are expert in their field, and will guide you through the process, making this an easy and hassle-free experience.

It is our mission to ensure that the products you purchase are fit-for-purpose and all things have been considered and communicated effectively.



Installation and project management

Landmark Products is one of the few

companies in Australia that provide a full-service offering from – design, manufacturing, and installation. Thanks to this strategic advantage, Landmark Products' national installation and project management service is renowned nationally for its expertise.

From small installations through to complex projects our experienced project managers and installation teams will work closely with you to ensure the project is delivered on time, to budget, and with an extended structural warranty of 20 years.



Kit-form engineered

Landmark structures arrive flat-packed, ready-to-assemble, with

no on-site fabrication needed. Step-by-step assembly instructions and appropriate documentation are included.

The benefits of kit-form are numerous. With all components pre-cut and pre-drilled, there is less noise, less waste, less disturbance to the environment. Because erection times are so much quicker than traditional construction, there is significantly less on-site disruption. For remote or difficult sites, Landmark's factory-built structures are the sensible solution.

- **Please note:** All plans presented in this brochure are indicative only. For more detailed information, contact your local Project Consultant.



Changing Places



Freedom for all.

On-slab steel restrooms

CHANGING PLACES

Specialised public restrooms that allow greater freedom for people with severe and profound disabilities and their carers.



Changing Places restrooms are a welcome addition to many public parks and venues throughout Australia. In the UK, where the Changing Places movement began, there are already well over 1200 facilities.

Together with the increasing popularity of all-abilities playgrounds which cater for people with disabilities, Changing Places are becoming a community expectation in Australia.

Two standard floor plans

Landmark Products specialise in two standard stand-alone Changing Places Restroom floor plans – Type 1A (no shower) and Type 2 (with shower), which are both compliant with Changing Places.

Landmark's designs are modern and spacious, allowing for easy cleaning and maintenance, and provide all the automatic equipment and features standard with Changing Places.

It is often cost effective, when building stand-alone Changing Places facilities, to add standard toilet cubicles to the facility to offer maximum public amenity.

All materials used in construction of Landmark Products' Changing Places are chosen for durability and cost efficiency.

As with all Landmark products, the full facility is delivered on-site in kit-form, ready to be built quickly with minimum on-site disruption.

ROOF OPTIONS

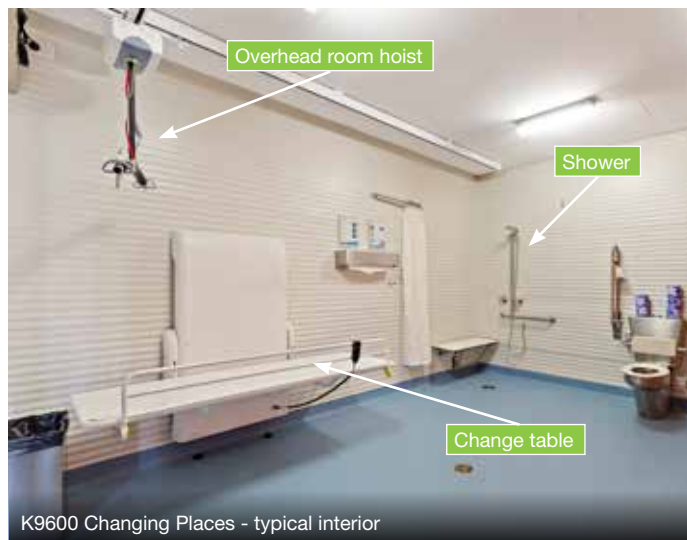


Materials	Finishes	Fixings
<ul style="list-style-type: none"> Steel posts with steel roof frame Colorbond® XRW Grade steel external wall sheeting and roofing Maxirib horizontal sheeting for internal walls Steel clad doors 	<ul style="list-style-type: none"> Powdercoated steel posts and roof frame 	<ul style="list-style-type: none"> Bolt-below slab posts Stainless steel anti-vandal fastening system Stainless steel push pull plates Access signage
Options		
<ul style="list-style-type: none"> Option of Coated FC panels or Modern ACM for external walls ACM for internal walls Colorbond® Ultra Grade steel internal and external wall sheeting and roofing Structural rating upgrade beyond N3 (W41) Standard size variations 	<ul style="list-style-type: none"> Two-pack epoxy paint or thermoplastic coatings for steel Baluster, screening and modesty panels 	<ul style="list-style-type: none"> Urinals Shower and change room facilities





K9600 Changing Places facility - City of Nedlands, WA



K9600 Changing Places - typical interior

Overhead room hoist

The recommended ceiling hoist uses the XY system or gantry, including two parallel fixed rails and a perpendicular moving traverse rail, providing coverage over the entire room. Safe working load is 180 kg (test load up to 300kg).

Change table

Remotely controlled by low voltage, and capable of managing 180 kg, the change table is freestanding with two safety sides. There is also a sanitising wipe dispenser.

Shower

Where included (in Type 2 or custom design), the shower and shower seat installation is Changing Places compliant. A handheld shower head with a 1500mm flexible hose is provided.

Automatic doors

The automatic doors recommended by Changing Places allow for one button entry, one button locking once inside, occupancy lighting and feature braille tactile signage. Highest security is retained through the national MLAK (Master Locksmith Access Key).



Standard Changing Places inclusions

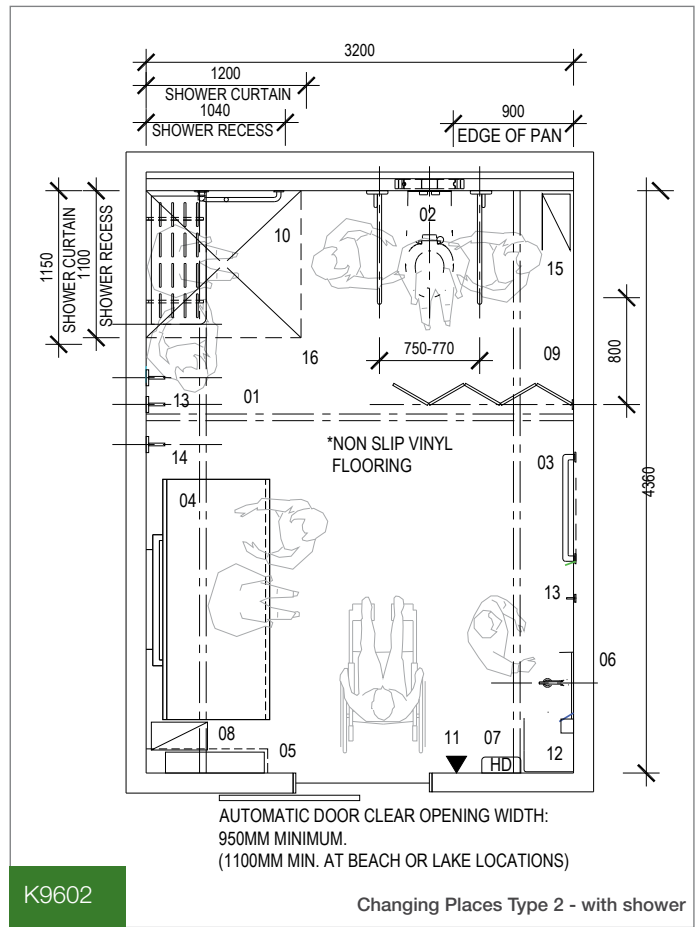
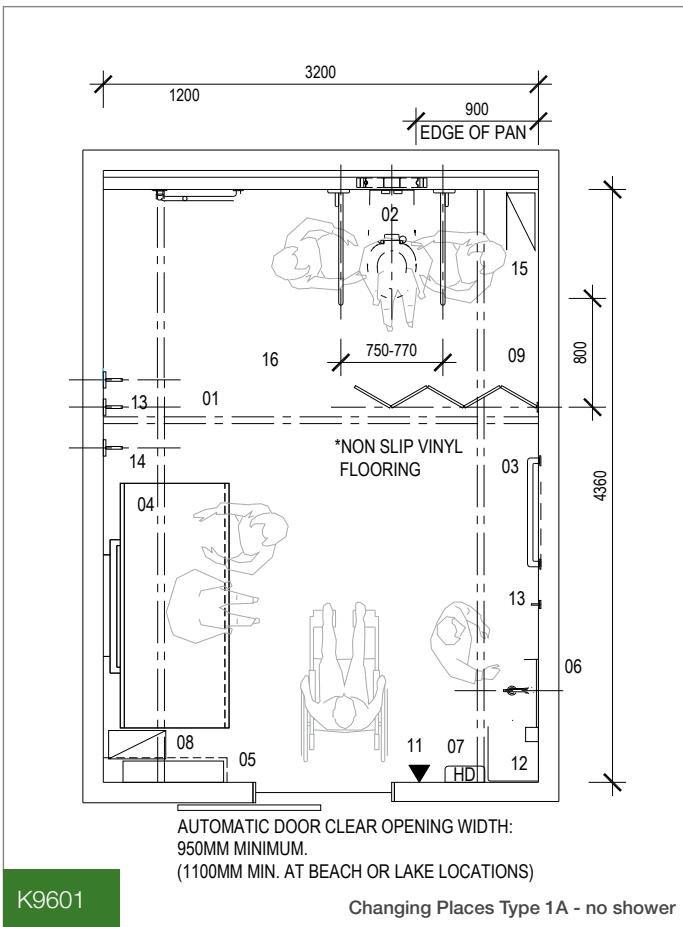
- Overhead automated hoist (constant charge)
- Accessible WC including backrest and lift-up grab rails
- Two 800mm long horizontal grab rails
- Automatically operated adjustable height change table 1800mm long with safety rail
- Sanitising wipe dispenser with shelf over
- Integrated wash hand basin
- Hand dryer
- Rubbish bin
- Retractable privacy curtain, wall mounted
- Soap dispenser
- Clothes hook
- Large sling hook
- Automatic door control
- Accessible shower with instant hot water heater (with Type 2 only)
- Commercial vinyl floor



K9600 Changing Places facility - Horsham, Victoria

- COMPLIANCE**
- Blue Accreditation Level: Facilities accredited as Blue Level Changing Places are those built according to one of three Changing Places layouts or based on alternative or modified plans which have been approved by the Changing Places technical advisory team prior to construction
 - Supplied with professional building application drawings
 - Galvanised steel as per AS/NZS 4680:2006
 - AS1428.1 Mobility and Access compliant.

Design Options:



- 01 Room Coverage Hoist
- 02 Accessible WC incl backrest and drop down changing rails
- 03 Two 800mm long horizontal changing rails at 800mm and 1000mm above floor level
- 04 Adjustable height change table, 1800mm long with side safety rail
- 05 Disposable change table, 1800mm long with side safety rail
- 06 Hand wash basin with integrated shelf
- 07 Hand dryer
- 08 Incontinence pad disposal bin
- 09 Retractable privacy screen 1500mm long
- 10 Accessible shower
- 11 Automatic door control
- 12 Soap dispenser
- 13 Clothes Hooks
- 14 Large slink hook
- 15 Sanitary napkin disposal bin
- 16 Telescopic shower curtains
- ▼ Automatic door control

CUSTOM SOLUTIONS AVAILABLE

Adding extra standard toilet cubicles to a stand-alone Changing Places restroom increases public amenity and cost effectiveness of a project.





CASE STUDY



Details

Customer:	City of Cockburn, Western Australia
Product:	Custom “Changing Rooms” restroom facility
Location:	Bibra Lakes Regional Playground
Installer:	PML Installations
Ref No:	29158

It is among the most spectacular playgrounds in Australia, thanks to a \$3.4 million upgrade completed in early 2017.

Featuring amazing interactive public art, shelters, barbecues and themed vegetation, Bibra Lake Playground is not only a wonderland for children but is built to welcome and accommodate people with disabilities.

The “Changing Places” restroom facility designed, manufactured and installed by Landmark Products is a key ingredient of this disability-inclusive approach by the City of Cockburn.

Changing Places is an international project which advocates for public toilets with an automated adult-sized change tables and automated hoists and access doors in major public spaces, to meet the needs of people with severe and profound disabilities.

Facility design

The Bibra Lake restroom is visible from both Progress Drive and the new playground (*pictured left*), easily accessed by all members of the public. The brief was to produce a facility to “capture architecturally and tastefully the key themes of the location, both historic and contemporary”.



The feature of the facility is the 15 square metre Changing Places room which includes such equipment which gives carers the confidence to take day trips, knowing that all toiletry and hygiene needs are fully met if needed.

Eight other toilet cubicles are also included, including a unisex accessible, two unisex ambulant, two female and two male cubicles. All cubicle doors are fitted with automated lock-out system.

A service duct runs the length of the facility, allowing, storage space, protection of services, cisterns, switchboard and pump control switchboard, and easy maintenance of all toilet systems.

Drafting and planning

Landmark’s design and drafting team produced a multi-faceted design specification for the restroom, including framing plan, slab plan and footing details, hydraulic layout, drainage and water supply plans and electrical layout.

Installation

As with all Landmark Products, this 63 square metre structure was pre-fabricated in the factory before being delivered in kit-form on site.

From the pouring of the slab until the handover took just over four weeks.

Recommendations

“I was extremely impressed not only with the playground, its design, playground elements and quality of finish, but also with Landmark’s toilet block and changing places facility. The modern design of the combination toilet block/changing place facility at Bibra lake, its construction, componentry and overall finish were top class and

the artwork just finished off a great project.”

Representative from City of Vincent.

“... the quality of work noted was impressive and similar to previous projects that Landmark has delivered for the City of Wanneroo.”

Representative from City of Wanneroo



Additional Cubicles



Cubicle fitout

Standard and optional items

A Changing Places facility becomes more economical and functional with the addition of extra cubicles.

There are three standard cubicles available for Landmark restrooms (in addition to Changing Places*).

To meet standards, prescribed combinations of cubicles must be in the one structure. For example, if there is only one cubicle, it must be a “disabled cubicle”.

On this page are the standard and optional inclusions in each of the cubicle types (as indicated on each floorplan). Size standards can also apply to each type.

Disabled Cubicle



Standard fitout items

- GR304 Stainless steel disabled pan with back rest, disabled handrails, plastic cistern and stainless steel pan flush button flashing.
- Standard Landmark toilet roll holder
- Chrome plated coat and hat hook with rubber cap.
- GR316 Stainless steel shelf.
- GR304 Stainless steel basin with a self-closing lever action cold water tap (no shroud as standard – see option).
- Signage – AS1428.1 Compliant

Optional fitout items

- Vertical polyethylene baby change table.
- GR 316 Stainless steel mirror
- Adult change table (requires larger cubicle/building footprint)
- Basin shroud (Colorbond or stainless steel)
- Disabled complaint shower (requires larger cubicle/building footprint)
 - Hand held shower including an adjustment rail with mixer tap and floor waste.
 - Fold down 960mm shower seat with a stainless steel frame and a plastic seat.

* In a stand-alone public toilet facility a Changing Places room does NOT count as a Disabled Cubicle.

Ambulant Cubicle



Standard fitout items

- GR304 Stainless steel ambulant pan with ambulant handrails, plastic cistern and stainless steel pan flush button flashing.
- Standard Landmark toilet roll holder
- Chrome plated coat and hat hook with rubber cap.
- GR304 Stainless steel basin with a spring closing cam or button action cold water tap (no shroud as standard – see option).
- Signage – AS1428.1 Compliant

Optional fitout items

- Basin shroud (colorbond or stainless steel)

Standard Cubicle



Standard fitout items

- GR304 Stainless steel standard pan with plastic cistern and stainless steel pan flush button flashing.
- Standard Landmark toilet roll holders

Optional fitout items

- Basin shroud (colorbond or stainless steel)
- Signage – AS1428.1 Compliant

Other options



- Urinals (tear drop or trough)
- Brass vandal proof keyed tap with hose mount (external or in service duct).
- Hot Water Systems
 - Electric instant or electric storage units
- Porcelain toilets and basins
- Hand Dryers (electric)
- Paper towel and soap dispensers
- Sharps Containers



More Information



HORIZONTAL CUSTOM ORB



ALUMINIUM COMPOSITE MATERIAL (ACM)

INTERNAL AND EXTERNAL WALL SHEETING OPTIONS (K9400 and K9500 only)

STANDARD

- Horizontal Custom Orb

OPTIONAL

- Vertical Colorbond®
- Plywood (9mm or 12mm) – stained or painted
- Fibre Cement Sheeting (9mm or 12 mm) painted on-site
- Aluminium Composite Material sheeting
- Other Colorbond® profiles



STRUCTURAL RATING UPGRADES FOR CYCLONE REGIONS

By default, all Landmark restrooms are designed to comply with a wind rating which is consistent with standards required for non-cyclonic regions of Australia.

Assessing the appropriate wind rating for the location of a shelter requires considering the surrounding terrain, the topographic effect, shielding and design factors.

Landmark Products will manage this entire process, and if necessary, design your structure with a ratings upgrade.

STAINLESS STEEL ANTI-VANDAL FASTENING SYSTEM

Comes with a matching key, the system deters vandals, and reduces theft and destruction.



ROOFING UPGRADE FOR HIGH CORROSIVE ENVIRONMENTS

For structures built in highly corrosive environment, such as near a beach or estuary, Landmark will recommend upgrading the upgrade of steel roofing to Colorbond® Ultra™.

Ultra™ comes in only four colours (see Roofing Colour chart on website).



TRACEABILITY PLAQUE

All Landmark products carry an individual serial number so all product information is readily available in the event of maintenance requirements.

THE LANDMARK ATLAS

If a restroom in the catalogue doesn't meet your specific need, ask your Project Consultant about the Landmark Atlas, a comprehensive directory of pre-engineered, completed modified and custom designs.



CERTIFICATIONS

IS ISO 9001 Certified

This internationally recognised accreditation assures the highest quality standard of manufacture - Landmark is safe, consistent, meets customer expectations, continuously improves and complies with the law.

IS BS OHSAS 18001:2007 Certified

This international Occupational Health and Safety Management certification demonstrates Landmark Products' commitment to sound occupational health and safety performance.

All Landmark structures meet or exceed the National Construction Code (NCC), and other relevant Australian standards including:

- AS1170 Structural Design Actions
- AS 1720 Timber Structures
- AS 4100 Steel Structures
- Plus many others

Our restrooms are designed with CPTED (Crime Prevention through Environmental Design) principles as paramount.

Materials and Finishes

All materials used in our public restrooms are sourced from carefully selected suppliers, known for consistent quality. As a certified ISO 9001 manufacturer offering a 25-year limited structural warranty, Landmark is committed to the highest quality processes to produce consistent, reliable products.



TIMBER

All our timber components are factory stained with our standard CD50 oil-based stain.

Pine: Our premium quality plantation hoop pine is stabilised and treated with safe Light Organic Solvent Preservatives (LOSP) to Hazard Level 3. LOSP treatment is used for structures subject to moist environments, preventing fungal decay of timber.

Hardwood: Our hardwood is select grade, sustainably harvested Western Queensland Hardwood (Spotted Gum or similar), ACQ treated to Hazard Level 4. Hardwood is graded F14 or better (the majority being F17). Ammoniacal Copper Quaternary (ACQ) preservative treatment provides greater safety of storage and application than CCA, yet retains similar performance. Landmark do not recommend painting hardwood.

Rosewood, an attractive and long-lasting timber, is used for timber screens. This too can be stained.

METAL

Steel: Mild-steel, hot-dipped galvanised to comply with AS/NZ 4680 standard, steel can be powder-coated to provide hard-wearing protection and a colourful, attractive finish. For higher level protection, two-pack epoxy paint or thermoplastic coatings can be applied.

Aluminium: Chosen for its resistance to corrosion, aluminium is about 30% as strong as steel, so it is used selectively.

DOWNLOADS

A full range of our colour and finish options is available at: landmarkpro.com.au/downloads



EPOXY/TWO PACK COLOURS



PINE PAINT COLOURS



ROOFING COLOUR OPTIONS

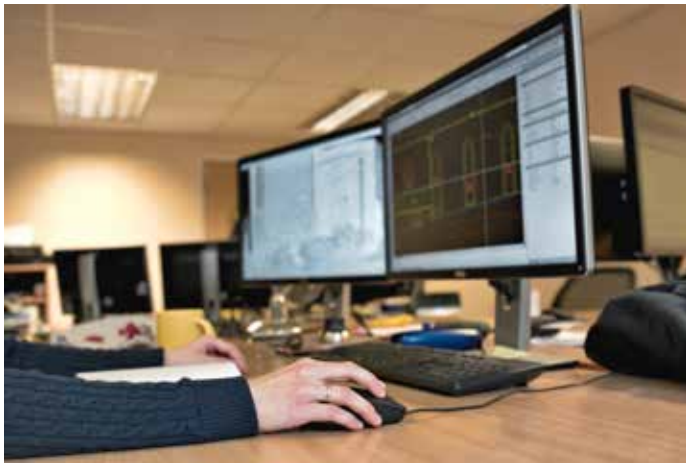


POWDER COATING COLOURS



TIMBER COLOUR TONES

Design and Installation



DESIGN SERVICES

Although we have an extensive range of standard products (which can be modified to your needs), when it comes to custom products, our design process starts with our customers.

A concept that starts in the mind of a developer, an urban planner or landscape architect, can become a place of community and a hub of activity thanks to collaboration with Landmark's experienced design specialists.

For custom work, Landmark's talented design team listen and seek a full understanding of the vision and purpose of each project. The starting point can be an in-depth consultation session, client's providing a few sketches on a page, or a comprehensive set of CAD drawings.

Whatever the starting point, Landmark's design team can "add flesh to the bones", and begin to add the intricate specifics and attention-to-detail needed to complete a project that, at the very least, meets our customers' needs. Ultimately our aim is to exceed expectations.

When it comes to bigger projects, Landmark Products understand that collaboration with other professionals is the key to cutting-edge, multi-faceted design, and our track record of working with landscape architects, urban designers, various consultants and other infrastructure specialists is second-to-none.

INSTALLATION

All Landmark structures are fabricated to be easy-to-install, delivered fully constructed in kit-form with instructions that makes on-site installation faster with less noise, lower environmental impact.

Our products take days or weeks to install on-site where traditional construction methods can take weeks or months.

Landmark's Installation Service includes both project management and the actual installation of the structures, with our own highly experienced installers and a select group of sub-contractors at the ready. Landmark is a licensed builder.

Project Management

Our dedicated Project Managers oversee the delivery and installation process with great attention to detail and quality. They are skilled professionals with experience in relevant construction methods.

On-Site

Landmark installation teams are highly skilled professionals with many years of building and construction experience. They are committed to providing a safe site environment for both themselves and the community.





landmarkpro.com.au | sales@landmarkpro.com.au | 1300 768 230