

CASE STUDY



Customer	The Glascott Group Pty. Ltd.
Product	Custom Steel Shelter, KB202 Barbecue and K005 Tumut Platform Seat
Project	Forde Estate Stage 4C Shelter
Location	Forde, ACT
Designer	Landmark Products in conjunction with JEA Urban Planning and Landscape Architecture
Installer	Landmark Products, April 2013
Ref No	13425

Landmark Products Case Study:

Customer The Glascott Group Pty. Ltd.

Product Custom Steel Shelter, KB202 Barbecue and K005 Tumut Platform Seat

Concept Design:

This shelter was a collaboration between Landmark Products and JEA Urban Planning and Landscape Architecture to provide an effective coverage for the barbecue and picnic area overlooking the Forde playground.

Two skillion roofs were joined together at common points to create an overlapping effect to match the site's design requirements.

Structural Elements:

The structure is approximately 5.24m high, 11m long and 13m wide. It is supported by two (2) big posts shared by the overlapping roofs and six (6) smaller angled posts supporting the rest of the structure.

All frames and posts are constructed in hot dipped galvanised material and finished with Interpon Yellow powder coating.

Roofing:

The upper roof is approximately 10 x 7 metres with a peak height of 5.24 metres. This overlaps the lower roof which has a wider span sized at 10.5 x 7.3 metres with a peak height of 4.5 metres.

Both roofs are constructed with Colorbond Custom Orb XRW grade roof sheeting in Ironstone which creates a great balance with the Yellow frames and posts.

Installation:

Four (4) M20 Chemset bolts were used for the bolt-down installation. These bolts have an external hex drive which provides a reliable socket fit and prevents water from setting in.

Two (2) 530 x 530mm base plates were installed to support the centre posts sized at 324Ø x 6.4mm CHS which connect the two skillion roofs.



Landmark Products Case Study:

Customer The Glascott Group Pty. Ltd.

Product Custom Steel Shelter, KB202 Barbecue and K005 Tumut Platform Seat

Installation:

Six (6) 380 x 380 mm base plates were installed inground to provide support to outer posts with a size of 168Ø x 4.8mm CHS. These smaller angled posts present a unique shelter design that matches the design aesthetics of Forde Park.

Platform Seat Design:

A square Tumut Platform bench was added to provide additional seating in the area. The seat frames were constructed in hot dipped galvanised steel and hardwood slats were powder coated to match the picnic settings.

Barbecue Range Design:

Our KB202 Eco Double Plate Barbecue Range is constructed in stainless steel (18mm FC sheeting backing) with a height of 800mm for ease of access.

This BBQ Range has a stainless steel hot plate with a thermal gasket and a 300mm safety zone to provide a safe and practical cooking solution for public spaces.

Barbecue Range Feature:

This BBQ Range features an easy gliding fat collection tray which prevents messy oil drips on the floor.

Its stainless steel construction and IP65-rated electrics allow for quick and easy cleaning or graffiti removal.

The low 8-amp draw can be connected to 10-amp domestic power which allows fast cooking with low energy consumption.



Landmark Products Case Study:

Customer The Glascott Group Pty. Ltd.

Product Custom Steel Shelter, KB202 Barbecue and K005 Tumut Platform Seat

Design:

Landmark worked together with JEA Urban Planning and Landscape Architecture to achieve a unique design element for the custom shelter while considering the park's theme. The BBQ range and platform seat comes in standard form, designed and manufactured by Landmark.

Site:

Forde Estate Stage 4C stands on the top of a hill and is set amongst existing trees. The location takes advantage of the natural long distance views and vistas.

Installation:

Landmark Products delivered and installed all products on-site in kit-form for quick and easy installation, which was completed in a short period of time.

Outcome:

As you can see from our published photos, the result was outstanding as our products complemented the other design elements present in the area well. The shelter allows people of any age to gather and have a barbecue while children can enjoy the playground.

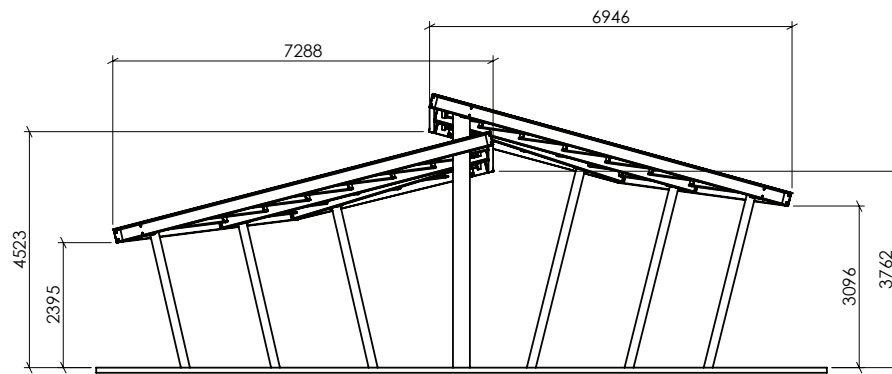


Landmark Products Case Study:

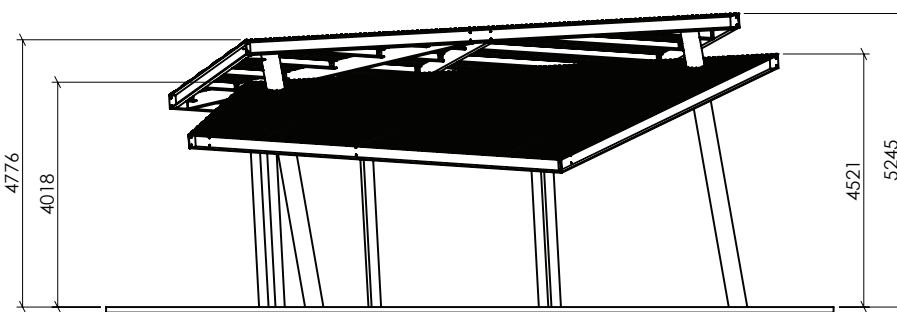
Customer The Glascott Group Pty. Ltd.

Product Custom Steel Shelter, KB202 Barbecue and K005 Tumut Platform Seat

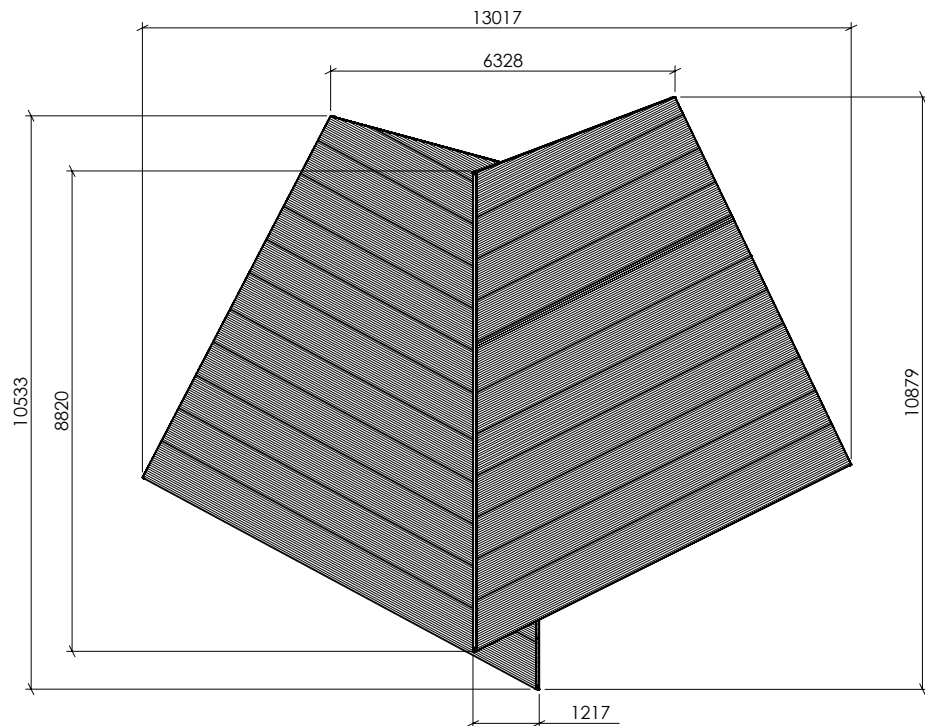
Shelter Design Layout:



ELEVATION
SCALE 1:100



SIDE ELEVATION
SCALE 1:100



PLAN VIEW
SCALE 1:100

Landmark Products Case Study:

Customer The Glascott Group Pty. Ltd.

Product Custom Steel Shelter, KB202 Barbecue and K005 Tumut Platform Seat

BBQ Range Layout:

